

Appartementhaus Val Sinestra

Kappl near Ischgl / Tyrol

Family-run apartment house in a wonderful panoramic location

- ✓ **FANTASTIC LOCATION SURROUNDED BY IDYLIC MOUNTAIN SCENERY**
- ✓ **SKI RUN TO THE HOUSE POSSIBLE (DEPENDING ON WEATHER CONDITIONS)**
- ✓ **DIAS CABLE CAR APPROX. 3 KM AWAY**



Nearby

- + **SKI PASS ALLIANCE SILVRETTA ARENA**
- + **SKI AREA KAPPL**
- + **DIAS CABLE CAR**
- + **ISCHGL**

Information about the region

Kappl: 1 258m above sea level, 2 545 inhabitants, idyllic village atmosphere, sincere hospitality, culinary delicacies and a fantastic variety of leisure activities.

Information about the accommodation

Location: Beautiful house, sunny and quiet in the district Plattwies. Distance to the town center approx. 1,5km, to the DIAS cable car of the ski area Kappl approx. 3km and to the ski bus approx. 50m. Skiing to the hotel possible (depending on weather condition).

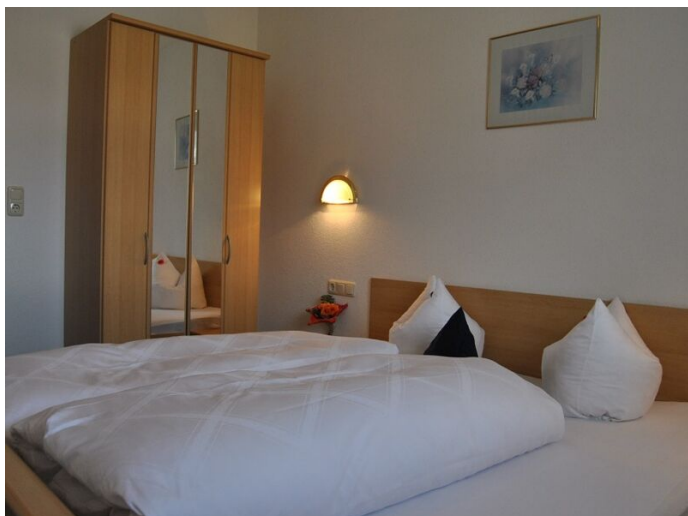
Facilities: Roofed parking, ski and ski boot room with boot dryer.

Extra charge: laundry, bread roll and milk service.

Apartment: Tastefully furnished with satellite TV, safe, radio with alarm function, kitchenette with refrigerator, stove with 4 burners, European convection oven, dishwasher and coffee maker, balcony, vacuum cleaner. WIFI.

Type A 3-room apartment: approx. 43m², for 4 guests; anteroom with wardrobe, kitchenette with dining area, 1 x bedroom with two separate beds, 1 x bedroom with double bed, shower and separate WC.

Type B 3-room apartment: approx. 53m², for 4 to 6 guests; anteroom with wardrobe, living room with kitchenette, sofa bed for 2 people, 2 x bedroom with double bed, bath with shower / WC.



Arrangement

- **Overnight stay without board**
- **Electricity, water, heating**
- **All laundry (bed linen, towels, dishtowels) - exchange every 14 days**
- **Final cleaning**
- **WIFI**
- **Parking**

	09.11. - 14.12.24 04.01. - 25.01.25 01.03. - 30.04.25	14.12. - 21.12.24 28.12.24 - 04.01.25 25.01. - 22.02.25	21.12. - 28.12.24 22.02. - 01.03.25
Apartment Type A (4PAX)	72,00	84,00	90,00
Apartment Type B (4PAX)	72,00	84,00	90,00
Apartment Type B (5-6 PAX)	87,00	105,00	127,50
Release	9 Days	16 Days	23 Days

Arrival day and minimum stay

	09.11. - 20.12.24 01.03. - 30.04.25	21.12.24 - 01.03.25
Arrival day	Daily	Saturday
Minimum stay	3 Nights	7 Nights

Specials

7=6 09.11. - 20.12.24 (= latest departure), daily arrival, 04.01. - 24.01.25 (=latest departure), arrival Saturday and from 01.03. - 30.04.25 (=latest departure) with daily arrival

Extras to pay on spot:

Local tax: approx. 5,00 € per person and day (age 15 and up)

Deposit: approx. 100,00 € apartment

Cot: approx. 3,50 € per day, under age 3 - on request (baby cot can be additional to maximum occupancy)

Check in: from 4 - 8 pm

Check out: until 10 am

Dogs are not allowed.

The standard terms and conditions of the Salzkammergut Touristik GmbH apply in the current version.

Rates and operating hours / timetables are subject to change

Our recommendations:

Get a travel cancellation insurance.

Informations



For environmental reasons, we recommend arriving and departing by public transport (train/bus). We are happy to help you organise your train journey within Austria. Talk to us!