

Feriendorf Obertraun

Obertraun / Upper Austria

Chalets in a sophisticated alpine style

- ✓ **DIRECTLY NEARBY LAKE HALLSTATT**
- ✓ **SALZKAMMERGUT WINTERCARD INCLUDED (MIN. 3 NIGHTS)**
- ✓ **WELLNESS AND FITNESS FACILITIES**



Nearby

- + **FREESPORTS ARENA DACHSTEIN-KRIPPENSTEIN**
- + **SKI RESORT DACHSTEIN-WEST WITH 160 KM SLOPES**
- + **UNESCO WORLD HERITAGE HALLSTATT**
- + **THERMAL SPA "EUROTHERMENRESORT BAD ISCHL"**

Information about the region

Obertraun near lake Hallstatt: 513m above sea level, about 750 inhabitants. Skiing and snowboarding in the Freeride Arena Dachstein-Krippenstein on 30 km official slope variants an 11km valley run, cross-country ski runs, ski touring, signposted snow shoe trails, tobogganing.

Information about the accomodation

Location: The resort welcomes you in the heart of the Salzkammergut directly nearby the lake Hallstatt. The center and the train station of Obertraun are situated in 5 minutes walking distance. The station of the Krippenstein cable car is approx. 2km away. The skibus is starting directly at the resort and is going up to the ski region Dachstein-West. The access to the cross-country ski run is just a few meters away. A ski rental is on the spot.

Facilities: The resort offers in total 82 chalets and 1 main building with reception, restaurant with café / bar and sun terrace. At arrival and departure it is possible to stop directly on the spot for the luggage. Then there is 1 parking lot per chalet available close to it. Additional parking is possible at the central parking area. Free WLAN in the whole resort.

Wellness: The wellness area offers a gym, indoor pool (approx. 3m x 7m) with children's pool and a small slide. Sauna, massages and beauty treatments can be booked (extra charge).

Chalets: All chalets are decorated in alpine country style with lots of wood and are equipped in the living room with a scandinavian wood stove (wood available at the reception for extra charge), flat screen-TV and fully equipped luxury kitchen (microwave, oven, induction cooker with min. 2 plates and dishwasher), balcony or terrace with garden furniture, double rooms with own flat screen SAT-TV, bathroom with shower or bathtub /toilet (partly also with separate toilet). Ski storage in every chalet.

Chalet "Hallstättersee": 64m², max. 4 adults.

Chalet in semi-detached house. Ground floor: kitchen, eating area, living area with couch. 1st floor: 2x bedrooms each with shower / toilet. Balcony which is accessible from both rooms.

Chalet "Grundlsee": 80m², max. 6 adults.

Chalet in semi-detached house (3 chalets). Ground floor: spacious living room WITHOUT couch, kitchen,

eating area, terrace with garden furniture, 1st floor: 2 bedrooms for 2 people each with flat screen TV, 1 bedroom with bunk bed, bathroom with bathtub. Separate shower and toilet.

Chalet "Attersee": 94m², max. 6 adults.

Ground floor: kitchen, eating area, living area with couch, extra bath or shower and separate toilet. 1st floor: 3 bedrooms: each with flat screen TV. 2 of them with own bathroom with bathtub or shower / toilet. Balcony accessible from two rooms.

Chalet "Wolfgangsee": 117m², max. 6 adults.

Ground floor: kitchen, eating area, living area with couch, private Sauna, bath or shower and separate toilet. 1st floor: 3 bedrooms: each with flat screen TV. 2 of them with own bathroom with bathtub or shower / toilet. Balcony accessible from two rooms. Extra bed in the bedrooms possible on request.

Chalet "Traunsee": 140m², max. 8 adults.

Ground floor: kitchen, eating area, living room with couch, bedroom with double bed and bath or shower / toilet. 1st floor: 3 bedrooms: each with flat screen TV. Every room with own bathroom with bathtub or shower / toilet, private sauna with shower room. Extra bed in the bedrooms possible on request.

Chalet "Mondsee": 148m², max. 10 adults.

Ground floor: living room, kitchen and eating area. 1 bedroom for 2 persons with own bathroom bathtub or shower/toilet. 1st floor: 4 bedrooms (2 of the rooms with own bathroom with bathtub or shower/toilet), 1 bathroom with bathtub or shower/toilet and private sauna with shower room. Extra bed in the bedrooms possible on request.

Chalet "Fuschlsee": 260m², max. 16 adults.

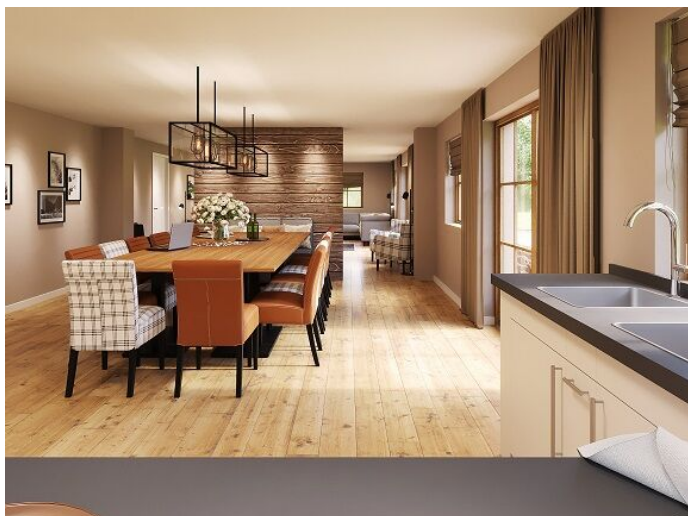
Ground floor: living room, kitchen, eating area for 16 people, 1x bedroom with 2 single beds, private sauna with shower room, bathroom with bathtub and toilet, terrace with garden furniture, 1st floor: 7 bedrooms for 2 people each, 3 bathrooms with bathtub, separate shower and toilet, 2 balconies.

Chalet "Altaussee": 55m², max. 4 adults. On request!

Ground floor: living room with couch, kitchen, eating area, bathroom with shower and toilet, terrace with garden furniture, 1st floor: 1x bedroom for 2 persons, bathroom with bathtub, separate shower and toilet.

Spoken languages: German, English, Dutch.

The following payment methods are accepted: Maestro, Visa, MasterCard and American Express.



Arrangement

- **Overnight stay without board**
- **Costs for electricity, heating, water**
- **Bed linen, towels, kitchen towels**
- **Entry to the wellness area and gym**
- **WIFI**
- **Parking (1 per chalet)**

Salzkammergut Touristik GmbH

NATURREISEN

A-4820 Bad Ischl, Götzstraße 12, Austria

T +43 (0) 6132 / 24 000 - 77

M operation@salzkammergut.co.at



Service charge (mandatory costs)

Per booking and chalet includes: final cleaning and first bed linen service. To be paid over Salzkammergut Touristik.

Chalet Hallstättersee	185,00 €
Chalet Grundlsee	245,00 €
Chalet Attersee	245,00 €
Chalet Wolfgangsee	255,00 €
Chalet Traunsee	310,00 €
Chalet Mondsee	360,00 €
Chalet Fuschlsee	450,00 €

SPECIALS (combinable)

Early bird bonus: 10% on all bookings made until 31.10.24, valid from 01.11.24 till 19.04.25

7=6: during the whole season (except 21.12.24 - 04.01.25). The cheapest night will be deducted.

Extras to pay on spot (mandatory costs):

Local tax: 3,00 € per person and night (from 15 years)

Environmental tax: 0,97 € per person and day

Extras to pay on spot (optional costs):

Half board package: 42,50 € per person and day (including breakfast buffet and 3-course dinner with a choice of dishes)

Breakfast buffet: 17,50 € per person and day (rich breakfast buffet). Children´s reduction for board: 0 - 3,9 years: 100% / 4 - 11,9 years: 50%

Change of Towels: 5,00 € per person and set (= 1 towel + 1 bath towel)

Change of bed linen: 13,00 € per person

Kids set: 21,50 € per set / stay (= baby cot incl. bed linen, highchair)

Pets: 39,50 € per pet and stay (without food)

Washing machine / laundry dryer: approx. 6,00 € per wash (detergent is added automatically). Use of laundry dryer is included.

Sauna: 9,50 € per person for approx. 4 hours (steam bath, Finnish sauna, infrared cabin, bucket shower and relaxation room) - advance booking requested!

Sauna set: 21,50 € per person for approx. 4 hours (including: bathrobe, towel and bath towel)

Massages: approx. 55,00 € whole body / approx. 35,00 € partial - on request

Check in: 3 - 6 pm

Check out: 8 - 10 am

Dogs are welcome - on request. Extra charge on site. In Austria there is a general leash and muzzle obligation!

The standard terms and conditions of the Salzkammergut Touristik GmbH apply in the current version **as well as the following storno conditions:**

30 to 21 days before arrival: 25%, from 20 to 14 days before arrival = 50 %, 13 to 7 days before arrival = 75 %, from 6 to 0 days before arrival and No Show = 100 % of whole price. The service charge is not counting to the whole price.

Rates and operating hours / timetables are subject to change.

Our recommendations: Get a travel cancellation insurance.

Informations



For environmental reasons, we recommend arriving and departing by public transport (train/bus). We are happy to help you organise your train journey within Austria. Talk to us!

The **UNESCO World Heritage List** currently lists 1,154 natural and cultural sites from 167 countries worldwide. The excellent cultural and natural monuments have an extraordinary universal value that must be preserved in the long term. Austria is represented with 10 World Heritage Sites.

