



Appartementhaus Val Sinestra

Kappl near Ischgl / Tyrol

Family-run apartment house in a wonderful panoramic location

- ✓ **INCL. SILVRETTA CARD PREMIUM**
- ✓ **FANTASTIC LOCATION SURROUNDED BY IDYLIC MOUNTAIN SCENERY**
- ✓ **DIAS CABLE CAR APPROX. 3 KM AWAY**
- ✓ **ISCHGL OUTDOOR POOL APPROX. 11 KM AWAY**



Nearby

- + **DIAS CABLE CAR**
- + **ISCHGL**
- + **ALPINARIUM GALTÜR**

Information about the region

Kappl: 1 258m above sea level, 2 545 inhabitants, idyllic village atmosphere, sincere hospitality, culinary delicacies and a fantastic variety of leisure activities.

Information about the accommodation

Location: Beautiful house in a sunny and quiet location in the Plattwies district. To the village center approx. 1,5km, to the DIAS cable car approx. 3km and to the outdoor pool Ischgl approx. 11km.

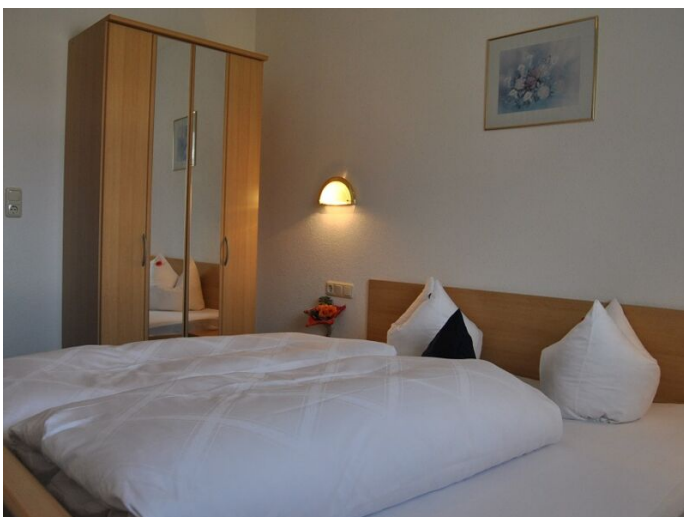
Facilities: Sun loungers, parasols, children's playground, covered parking lot

Extra charge: laundry, bread roll and milk service.

Apartment: Tastefully furnished with satellite TV, safe, radio with alarm function, kitchenette with refrigerator, stove with 4 burners, European convection oven, dishwasher and coffee maker, balcony, vacuum cleaner. WIFI.

Type A 3-room apartment: approx. 43m², for 4 guests; anteroom with wardrobe, kitchenette with dining area, 1 x bedroom with two separate beds, 1 x bedroom with double bed, shower and separate WC.

Type B 3-room apartment: approx. 53m², for 4 to 6 guests; anteroom with wardrobe, living room with kitchenette, sofa bed for 2 people, 2 x bedroom with double bed, bath with shower / WC.





Arrangement

	14.06. - 05.07.25 16.08. - 05.10.25	05.07. 16.08.25
Apartment Type A (4PAX)	91,50	102,00
Apartment Type B (4PAX)	91,50	102,00
Apartment Type B (5-6 PAX)	118,50	129,00
Arrival day	Daily	Daily
Minimum stay	3 nights	3 nights
Release	3 days	9 days



Specials

7=6 valid in the period from 14.06. - 01.07.25 (= last departure) and 16.08. - 05.10.25 (= last departure) with daily arrival.

10=9 valid in the period from 01.07. - 16.08.25 (= last departure) with daily arrival.

Extras to pay on spot:

Local tax: approx. 5,00 € per person and day (age 15 and up)

Deposit: approx. 100,00 € apartment

Cot: approx. 5,00 € per day, under age 3 - on request (baby cot can be additional to maximum occupancy)

Check in: from 4 - 8 pm

Check out: until 10 am

Dogs are not allowed.

The standard terms and conditions of the Salzkammergut Touristik GmbH apply in the current version.

Rates and operating hours / timetables are subject to change

Our recommendations: Get a travel cancellation insurance.

Informations



For environmental reasons, we recommend arriving and departing by public transport (train/bus). We are happy to help you organise your train journey within Austria. Talk to us!