

# Amadeus Micheluzzi

## Serfaus / Tyrol

Family-run 4 \*\*\*\* star hotel

- ✓ IDEAL STARTING POINT FOR EXCURSIONS
- ✓ SEVERAL SKI AREAS CLOSEBY
- ✓ SPACIOUS WELLNESS AREA WITH INDOOR POOL AND MOUNTAIN PANORAMA



## Nearby

- + SKI AREA SERFAUS-FISS-LADIS
- + CROSS-COUNTRY SKI RUN
- + SPEED TRACK
- + FREE USE OF THE METRO

## Information about the region

---

Serfaus: 1 429m above sea level, 1 200 inhabitants; The whole village is organized by an underground system - the village is without car traffic - underground is free of charge! Approx. distances: St. Anton 55km, Innsbruck 97km, Ischgl 58km, next train station in Landeck approx. 27km distance.

## Information about the accomodation

---

Location: Slightly elevated on the outskirts of Serfaus, the hotel is situated only 150m from the town center, 300m from the ski lift and approx 27km from the train station Landeck.

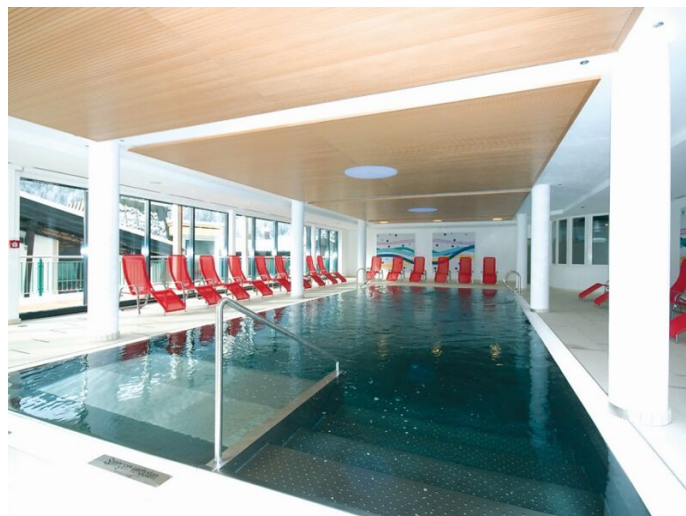
Facilities: The hotel offers restaurant, dining room, breakfast room, bar, lounge, reading room, playroom for children, stone pine parlor, elevator, terrace, parking (subject to availability), tabletop soccer, free WIFI and underground parking (extra charge). Gluten free dishes are possible (on request.)

Wellness: Spacious wellness area (350m<sup>2</sup>) with indoor pool (approx. 12,6 x 5,2m) and fantastic view over the mountain scenery, sauna, steam bath, infrared cabin and relaxation room.

Extra charge: Massages, solarium and cosmetic treatments.

Rooms: Double room Superior Kat. A + B + C: Approx. 42 - 45m<sup>2</sup>, bathtub or shower, separate WC, vanity mirror, hairdryer, safe, satellite TV, telephone and balcony or terrace (max. occupancy: 4 adults or 2 adults + 2 children).

Spoken languages: German, English.



## Arrangement

- **Overnight stay with HP Plus:**
  - Rich breakfast buffet with health-food corner, juice bar and tea bar
  - Afternoon snack: 03:00 – 04:30 pm, warm and cold dishes as well as daily different choice of cakes or Strudel and fruit salad
  - 5-course dinner with a choice of dishes and salad bar
- **Free WIFI**
- **Parking (subject to availability)**

## Reduction for children

---

Reduction for children staying in parents' room (2 full-paying adults):

0 - 2.9 years: 80%

3 - 5.9 years: 70%

6 - 12.9 years: 50%

13 - 99 years: 20%

### **MANDATORY COSTS - payable on spot:**

Christmas and New Year's Eve Dinner (24.12. and 31.12.):

Festive dinner 89,00 € per person (age 13 and older).

### Extras to pay on spot:

**Local tax:** approx. 2,60 € per person and day (age 15 and up)

**Pets:** 19,00 € per pet and day (without food)

**Underground parking:** 19,00 € per day (optional)

**Check in:** from 3 pm

**Check out:** until 10 am

Dogs are welcome - on request. Extra charge on site. In Austria there is a general leash and muzzle obligation!

The standard terms and conditions of the Salzkammergut Touristik GmbH apply in the current version.

Rates and operating hours / timetables are subject to change

Our recommendations:

Get a travel cancellation insurance.

---

## Informations

---



For environmental reasons, we recommend arriving and departing by public transport (train/bus). We are happy to help you organise your train journey within Austria. Talk to us!